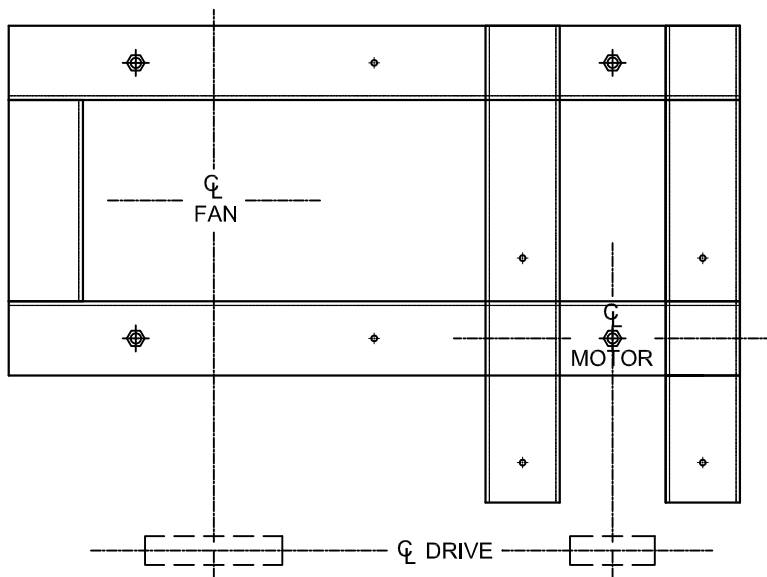
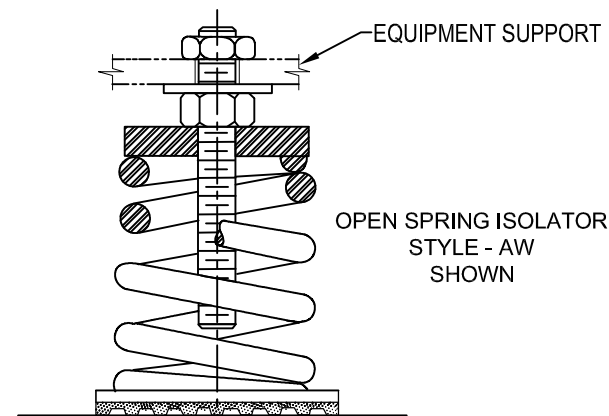


REV.	DESCRIPTION	DATE	BY

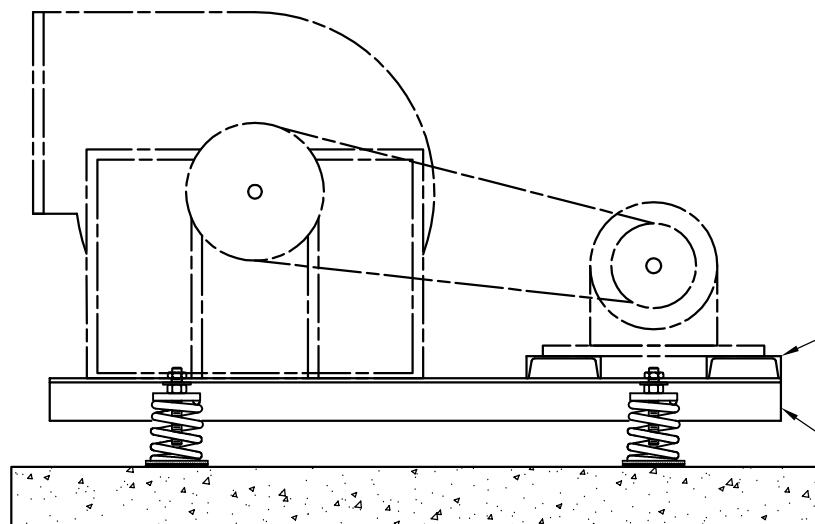
**NOTE:**

STEEL MEMBERS ARE STANDARD AISC STRUCTURAL SECTIONS SIZED TO PROPERLY SUPPORT LOAD AND TO LIMIT STEEL BEAM DEFLECTION TO 0.05" MAXIMUM DUE TO BELT PULL AND STARTING TORQUE.

WHEEL DIAMETERS 12-1/4" TO 36-1/2" ANGLE CONSTRUCTION  
40-1/4" TO 54-1/4" ANGLE OR WIDE FLANGE CONSTRUCTION 60"  
AND LARGER WF AND CHANNEL CONSTRUCTION.



BRACKETS NOT REQUIRED FOR ANGLE CONSTRUCTION.  
WF BASES FURNISHED WITH HEIGHT-SAVING BRACKETS.



OTHER MATERIALS, COMPOUNDS, OR FINISHES WITH EQUAL OR SUPERIOR PROPERTIES MAY BE SUBSTITUTED AS THEY BECOME AVAILABLE.

**CERTIFIED FOR:**

JOB NAME: \_\_\_\_\_

CUSTOMER: \_\_\_\_\_

CUSTOMER P.O.: \_\_\_\_\_

SALES ORDER: \_\_\_\_\_

## MODEL SFB INTEGRAL STEEL FAN AND MOTOR BASE 3 INCH DEFLECTION WITH NON-SEISMIC ISOLATORS



**THE VMC GROUP**  
The Power of Together  
Bloomingdale, NJ 07403  
Houston, TX 77041

SCALE:

NONE

SHEET:

1 OF 1



DRAWING NO.:

REVISION